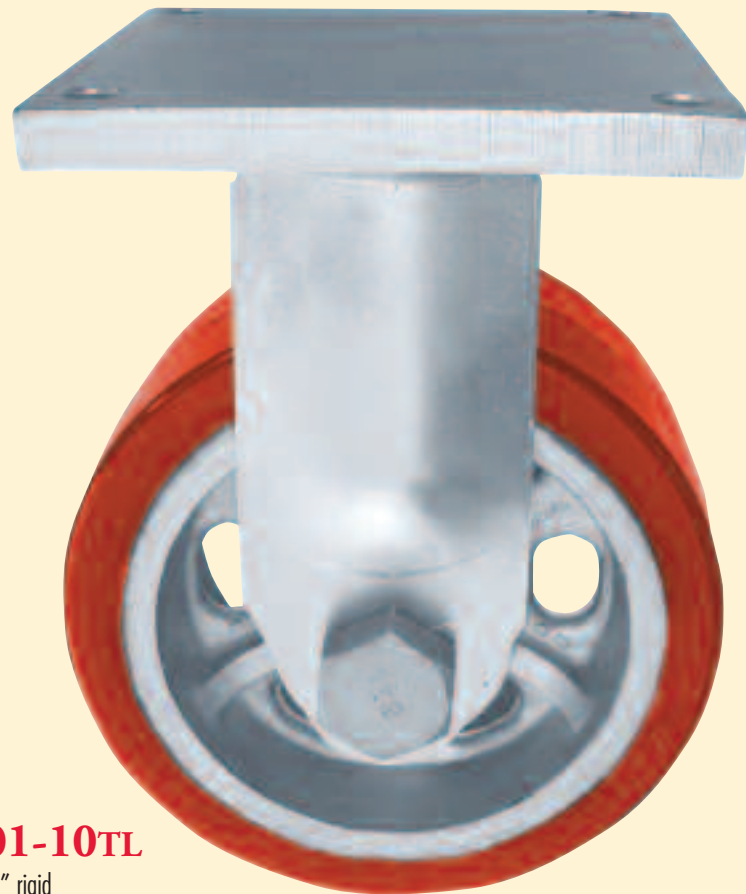


900-8TD

- 8" swivel
- Tapered roller bearing
- Payductile cast iron wheel



901-10TL

- 10" rigid
- Tapered roller bearing
- Paythane polyurethane on cast iron wheel

**900/901
SUPER HEAVY**

The 900 is constructed with indestructible features. For units up to 68,000 lbs.

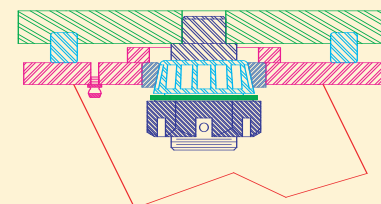
Engineering Data:

- ¾" steel top plate.
- 1½" welded king bolt.
- 1½" tapered thrust bearing.
- 7" sealed Timken load raceway.
- ½" embossed legs welded inside and out to support base.

Standard Features/Components:

- Zinc plated finish.
- 1¼" axle.
- 1½ x 1¼ x 4½" hardened spanners.
- Lubrication fittings.
- Companion Rigid.

Raceway Construction:



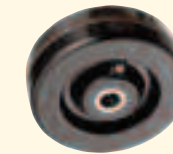
Wheels & Optional Extras:



Paythane
polyurethane bonded to a metal center



Payductile Steel
cast high tensile ductile iron



Plexite Phenolic
macerated canvas



V-groove
machine grooved steel



WB Brake
shoe locks wheel



SL 4-Position Swivel Lock
plunger engages at 90° angles

900 SWIVEL & 901 RIGID SPECIFICATIONS

WHEEL SPECIFICATIONS				CATALOG NUMBER				Approx. Weight lbs	Swivel Radius inches	Height Over-All inches	Top Plate inches
Diameter inches	Width inches	Type	Cap Each lbs	Swivel		Rigid					
				Roller Bearings	Timken Bearings	Roller Bearings	Timken Bearings				
6	4	Payductile	8000/17000	900-6UD	900-6TD	901-6UD	901-6TD	56	5¼	9¼	Width by Length: 8½ x 8½
		Paythane	5750	900-6UL	900-6TL	901-6UL	901-6TL	53			
8	4	Payductile	8000/17000	900-8UD	900-8TD	901-8UD	901-8TD	70	6½	11¼	
		Paythane	5750	900-8UL	900-8TL	901-8UL	901-8TL	62			
		V-Groove	15000	900-8UDG	900-8TDG	901-8UDG	901-8TDG	67			
10	4	Payductile	8000/17000	900-10UD	900-10TD	901-10UD	901-10TD	83	7¾	13¼	
		Paythane	5750	900-10UL	900-10TL	901-10UL	901-10TL	74			
		V-Groove	15000	900-10UDG	900-10TDG	901-10UDG	901-10TDG	79			
12	4	Payductile	8000/17000	900-12UD	900-12TD	901-12UD	901-12TD	89	8¾	15¼	
		Paythane	5750	900-12UL	900-12TL	901-12UL	901-12TL	80			
	3¾	Plexite	4000	900-12UM	800-12TM	901-12UM	901-12TM	58			

• Weights shown represent swivels; Rigid caster weigh approximately 15% less. Maximum capacity for Payductile wheels with roller bearings is 8000 lbs.