

**600-6UM**

- 6" swivel
- Anti-friction roller bearing
- Plexite phenolic wheel



**601-6TD**

- 6" rigid
- Tapered roller bearing
- Payductile cast iron wheel

**600/601  
HEAVY TIMKEN**

The 600 is the ultimate in super heavy duty caster design. The watch-like swivel construction is incomparable. Each cold-forged steel component part is heat-treated for the most severe operating conditions imaginable. The word "indestructible" was meant for this series.

**Applications:**

For the most severe applications with capacities up to 14,000 pounds. Originally designed for the mobile home industry, the 600 is also ideal for the heaviest manually operated loads and power-driven equipment.

**Engineering Data:**

- 1/2" coined embossed cold-forged top plate.
- 1 1/4" king bolt, welded in place.
- Thrust load carried by 1 1/4" timken roller bearing.
- 4" load bearing raceway with 1/2" balls.
- 3/8" legs welded on both sides to the yoke base.

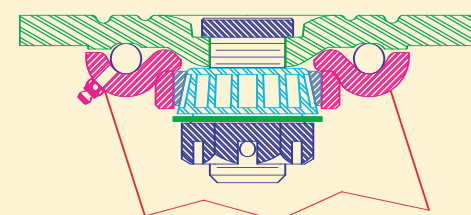
**Standard Features/Components:**

- Zinc plated finish.
- 1" axle.
- 1 1/4 x 1 x 3/8" hardened spanners.
- Grease fittings in swivel and wheel.

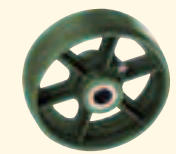
**Companion 601 Rigid:**

3/8" embossed legs welded to a 1/2" top plate.

**Raceway Construction:**



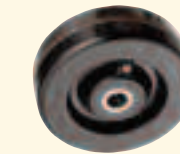
**Wheels & Optional Extras:**



**Payron Semi-Steel**  
high tensile sintered iron



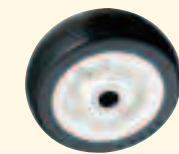
**Payductile Steel**  
cast high tensile ductile iron



**Plexite Phenolic**  
macerated canvas



**V-groove**  
machine grooved steel



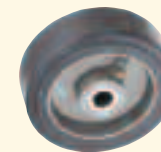
**Mirakush**  
85 duro. gray polyurethane



**Miratek**  
95 duro. red polyurethane



**Paythane**  
polyurethane bonded to a metal center



**Bronco Mold-On**  
rubber bonded to aluminum center



**WS Wheel Seals**  
locks out foreign matter



**WB Brake**  
shoe locks wheel



**SL 4-Position Swivel Lock**  
plunger engages at 90° angles

**600 SWIVEL & 601 RIGID SPECIFICATIONS**

WHEEL SPECIFICATIONS				CATALOG NUMBER				Approx. Weight lbs	Swivel Radius inches	Height Over-All inches	Top Plate inches
Diameter inches	Width inches	Type	Cap Each lbs	Swivel		Rigid					
				Roller Bearings	Timken Bearings	Roller Bearings	Timken Bearings				
6	3	Payron	2600	600-6US	600-6TS	601-6US	601-6TS	32	5 1/4	8 1/4	Width by Length: 5 1/2 x 7 1/2
		Payductile	3500	600-6UD	600-6TD	601-6UD	601-6TD	36			
		Plexite	2500	600-6UM	600-6TM	601-6UM	601-6TM	21 1/2			
		Mirakush	1200	600-6UK	600-6TK	601-6UK	601-6TK				
		Miratek	2500	600-6UT	600-6TT	601-6UT	601-6TT				
8	2 1/2	V-Groove	3000	600-8UDG	600-8TDG	601-8UDG	601-8TDG	34 1/2	6 1/2	10 1/4	
		Payron	2900	600-8US	600-8TS	601-8US	601-8TS	37			
	Payductile	3500	600-8UD	600-8TD	601-8UD	601-8TD	25				
	Bronco	840	600-8UV	600-8TV	601-8UV	601-8TV					
	Paythane	2800	600-8UL	600-8TL	601-8UL	601-8TL					
	Plexite	2800	600-8UM	600-8TM	601-8UM	601-8TM					
	Mirakush	1360	600-8UK	600-8TK	601-8UK	601-8TK					
Miratek	2800	600-8UT	600-8TT	601-8UT	601-8TT	26					
10	3	Payron	3000	600-10US	600-10TS	601-10US	601-10TS	38 1/2	7 3/8	12 1/4	Bolt Hole Spacing: 3 3/8 x 5 1/4" slotted to 4 1/8 x 6 1/8
		Payductile	3600	600-10UD	600-10TD	601-10UD	601-10TD	46 1/2			
		Bronco	1000	600-10UV	600-10TV	601-10UV	601-10TV	30			
		Paythane	3000	600-10UL	600-10TL	601-10UL	601-10TL				
		Plexite	3000	600-10UM	600-10TM	601-10UM	601-10TM				
		Mirakush	1700	600-10UK	600-10TK	601-10UK	601-10TK				
		Miratek	2900	600-10UT	600-10TT	601-10OUT	601-10TT				
12	3	Payron	3300	600-12US	600-12TS	601-12US	601-12TS	44 1/2	8 3/4	14 1/2	
		Bronco	1140	600-12UV	600-12TV	601-12UV	601-12TV	33 1/2			
		Paythane	3200	600-12UL	600-12TL	601-12UL	601-12TL				
		Plexite	3200	600-12UM	600-12TM	601-12UM	601-12TM				
		Mirakush	1900	600-12UK	600-12TK	601-12UK	601-12TK				
		Miratek	3000	600-12UT	600-12TT	601-12UT	601-12TT				