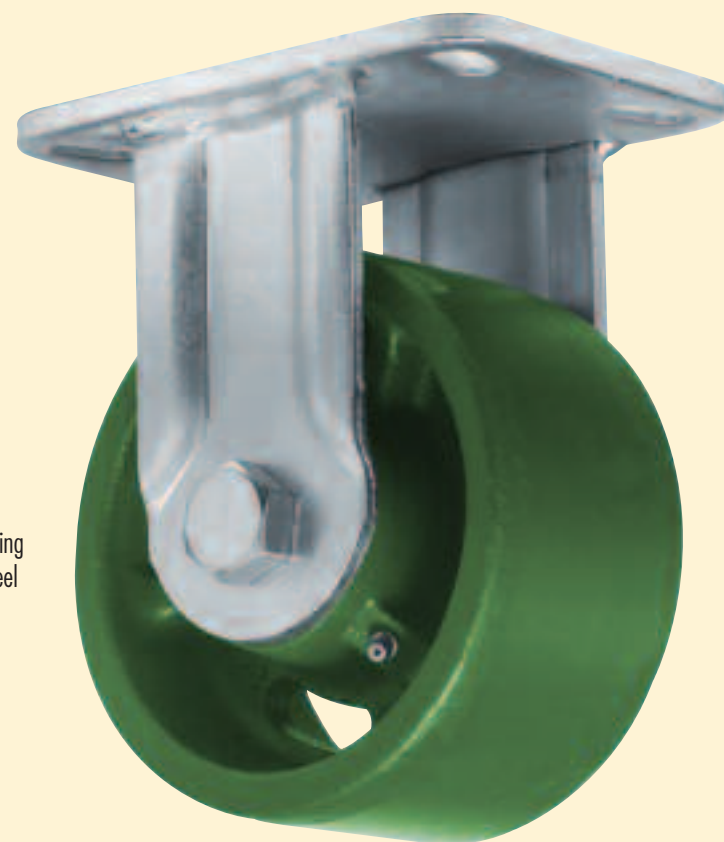


400-6UM

- 6" swivel
- Anti-friction roller bearing
- Plexite phenolic wheel



401-6US

- 6" rigid
- Anti-friction roller bearing
- Payron semi-steel wheel

**400/401
HEAVY DUTY**

The 400 is designed to carry heavy loads, even under sever operating conditions. The hardened swivel components are constructed of heavy gauge cold-forged steel, formed under extreme pressure to the most exacting tolerances, thereby assuring smooth swiveling on mirror-like raceways.

Applications:

For equipment in the range of 2000 to 8000 lbs. Designed for the heaviest manual loads, and units drawn occasionally by power. Will withstand punishing and continuous service, including severe shock loads.

Engineering Data:

- 5/16" cold-forged top plate.
- 3/4" heat-treated nut and bolt king bolt.
- 1/4" wrap-around style and fully formed legs.
- 5/16" contour base.

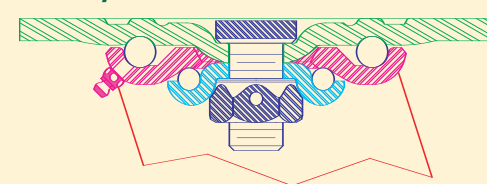
Standard Features/Components:

- Zinc plated vibratory finish.
- Lubrication fittings for swivel and wheel.
- 3/4" nut and bolt axles.
- 1 x 3/4 x 3 3/8" hardened spanners.

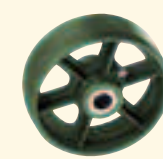
Companion 401 Rigid:

1/4" embossed legs welded to a 5/16" top plate.

Raceway Construction:



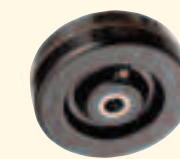
Wheels & Optional Extras:



Payron Semi-Steel
high tensile sintered iron



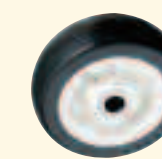
Payductile Steel
cast high tensile ductile iron



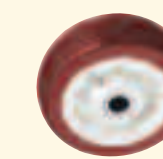
Plexite Phenolic
macerated canvas



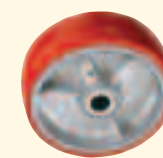
Full Pneumatic
air inflated wheel



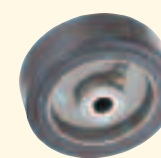
Mirakush
85 duro. gray polyurethane



Miratek
95 duro. red polyurethane



Paythane
polyurethane bonded to a metal center



Bronco Mold-On
rubber bonded to aluminum center



WS Wheel Seal
locks out foreign matter



WB Brake
shoe locks wheel



SL 4-Position Swivel Lock
plunger engages at 90° angles

400 SWIVEL & 401 RIGID SPECIFICATIONS

WHEEL SPECIFICATIONS				CATALOG NUMBER				Approx. Weight lbs	Swivel Radius inches	Height Over-All inches	Top Plate inches
Diameter inches	Width inches	Type	Cap Each lbs	Swivel		Rigid					
				Roller Bearings	Timken Bearings	Roller Bearings	Timken Bearings				
6	3	Payron	1850	400-6US		401-6US		22	4 7/8	7 3/4	Width by Length: 4 3/4 x 6 5/8
		Payductile	2200	400-6UD		401-6UD		24			
		Plexite	1800	400-6UM		401-6UM		16			
		Mirakush	1200	400-6UK		401-6UK					
		Miratek	1700	400-6UT		401-6UT					
8	3	Payron	2000	400-8US		401-8US		25	6 1/2	10 1/4	
		Payductile	2300	400-8UD	400-8TD	401-8UD	401-8TD	26			
		Bronco	840	400-8UV	400-8TV	401-8UV	401-8TV	17 1/2			
		Paythane	2000	400-8UL	400-8TL	401-8UL	401-8TL				
		Plexite	2000	400-8UM	400-8TM	401-8UM	401-8TM				
		Mirakush	1300	400-8UK	400-8TK	401-8UK	401-8TK				
		Miratek	1800	400-8UT	400-8TT	401-8UT	401-8TT				
	2.80-4	Pneumatic	300**	400-8UW		401-8UW		16			
10	3	Payron	2200	400-10US	400-10TS	401-10US	401-10TS	30	7 7/8	12 1/4	
		Bronco	1000	400-10UV	400-10TV	401-10UV	401-10TV	20			
		Paythane	2200	400-10UL	400-10TL	401-10UL	401-10TL				
		Plexite	2200	400-10UM	400-10TM	401-10UM	401-10TM				
		Mirakush	1550	400-10UK	400-10TK	401-10UK	401-10TK				
		Miratek	2000	400-10UT	400-10TT	401-10UT	401-10TT				
	3.50-4	Pneumatic	515**	400-10UW		401-10UW					
12	3	Payron	2300	400-12US	400-12TS	401-12US	401-12TS	36	8 7/8	14 1/2	
		Bronco	1140	400-12UV	400-12TV	401-12UV	401-12TV	24 1/2			
		Paythane	2300	400-12UL	400-12TL	401-12UL	401-12TL				
		Plexite	2300	400-12UM	400-12TM	401-12UM	401-12TM				
		Mirakush	1800	400-12UK	400-12TK	401-12UK	401-12TK				
		Miratek	2100	400-12UT	400-12TT	401-12UT	401-12TT				
	4.00-6	Pneumatic	700**	400-12UW		401-12UW		20			

• Weights shown represent swivels; Rigid casters weight approximately 15% less.
• When inflated to 50 lbs. and operated less than 5 mph.