

# Theater Casters Super Swivels

## LOW PROFILE CASTERS FOR STAGE AND SCENERY MOVING

Easy swiveling, non-marking caster. Perfect for positioning heavy loads in tight spaces.



**240-3DR-DW-C**

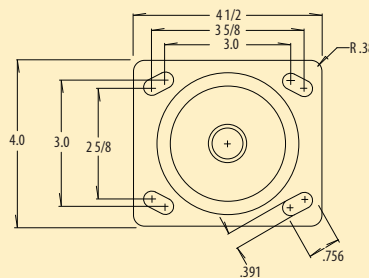


**840-3UM-C**

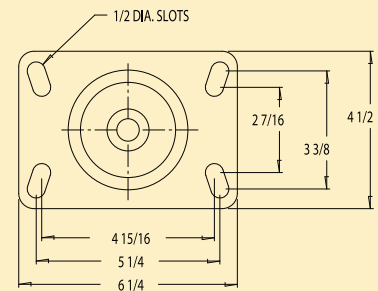
• Shown with optional black powder coating

THEATER SWIVEL CASTERS							
WHEEL SPECIFICATIONS			Cap Each lbs	Catalog Number	Height Overall inches	Approx Weight lbs	Top Plate A or C
Diameter inches	Type	Number wheels					
2	Payflex	6	540	240-20X-DW	4 $\frac{1}{4}$	11	
	Payrock		750	240-20H-DW			
3	Payflex	6	600	240-30X-DW	5 $\frac{3}{16}$	12	
	Payrock		750	240-30H-DW			
	Mirakush		870	240-3DR-DW			
3	Payflex	3	450	540-30X	5 $\frac{3}{8}$	14	
	Payrock		810	540-30H			
	Mirakush		450	540-3BE			
	Miratek		630	540-3BF			
3	Payflex	6	900	540-30X-DW	5 $\frac{1}{2}$	16	
	Payrock		1000	540-30H-DW			
	Durakush		900	540-3BE-DW			
	Miratek		1000	540-3BF-DW			
3	Peejay	3	1800	840-3PJ-C	5 $\frac{5}{8}$	19	Top Plate C only
	Plexite		1800	840-3UM-C			
	Paythane		1800	840-3UL-C			

### Diagrams for Super Swivels and Quad Casters



**A Top Plate**  
Suffix -A as 290-20X-DW-4A

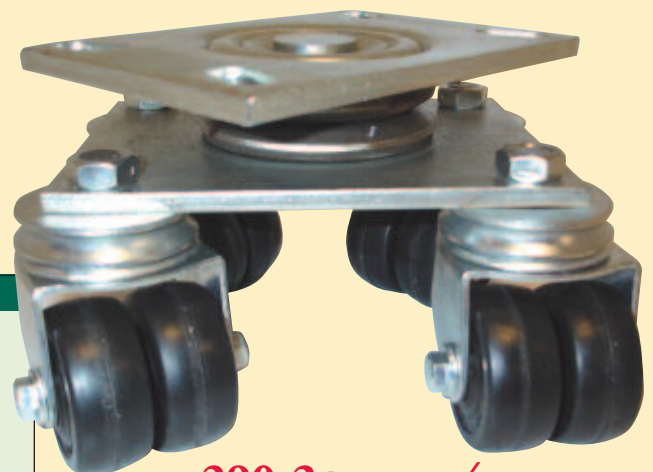


**C Top Plate**  
Suffix -C as 290-20X-DW-C

## Quad Casters

Five swivelling points allow for the ultimate easy turning with a short overall height of 4 $\frac{5}{16}$ ". Optional black powder coating available.

QUADRUPLE SWIVEL CASTERS							
WHEEL SPECIFICATIONS			Cap Each lbs	Catalog Number	Height Overall inches	Approx Weight lbs	Top Plate C only
Diameter inches	Type	Number wheels					
2	Payflex	8	720	290-20X-DW-4	4 $\frac{5}{16}$	10	
	Payrock		1000	290-20H-DW-4			



**290-20X-DW-4**