

290-6US

- 6" swivel
- Anti-friction roller bearings
- Payron semi-steel wheel



291-6UM

- 6" rigid
- Anti-friction roller bearings
- Plexite phenolic wheel

**290/291
HEAVY MEDIUM**

The 290 offers the ultimate in a heavy medium duty cold-forged steel caster. Extraordinary design features allow for punishing service under severe operating conditions.

Applications:

For equipment in the range of 1500 to 5000 lbs. Large wheel selection allows for a variety of general applications. Especially suited for rugged conditions.

Engineering Data:

- 3/4" hydraulically upset kingpin.
- 5/16" thick cold-forged top plate.
- 1/4" cold-forged top cup with 5/16" balls.
- .194 embossed legs welded to top cup.
- All parts case hardened.

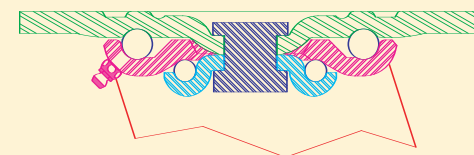
Standard Features/Components:

- Zinc plated finish.
- Lubrication fittings for swivel and wheel.
- 1/2" nut and bolt axles.
- 3/4 x 1/2 x 2 5/16" hardened spanners.

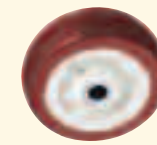
Companion 291 Rigid:

The 291 has thick, embossed legs welded to a husky top plate.

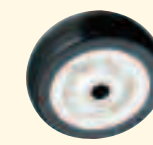
Raceway Construction:



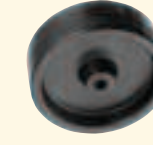
Wheels & Optional Extras:



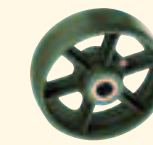
Miratek
95 duro. red polyurethane



Mirakush
85 duro. gray polyurethane



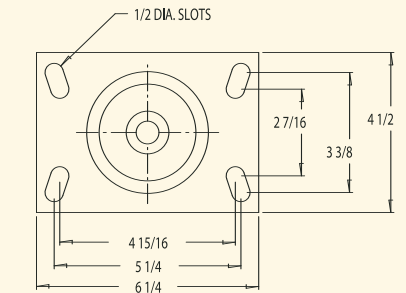
Peejay
polyolefin plastic



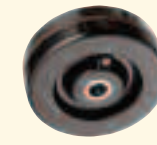
Payron Semi-Steel
high tensile sintered iron



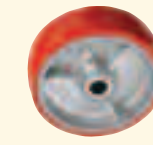
V-groove
machine grooved steel



Top Plate C
Suffix-C



Plexite Phenolic
macerated canvas



Paythane
polyurethane bonded to a metal center



WS Wheel Seals
locks out foreign matter



TG Thread Guards
cannot be used with WK brakes



WK Brake
locks wheel, not used with Thread Guards

290 SWIVEL & 291 RIGID SPECIFICATIONS											
WHEEL SPECIFICATIONS				CATALOG NUMBER				Approx. Weight lbs	Swivel Radius inches	Height Over-All inches	Top Plate inches
Diameter inches	Width inches	Type	Cap Each lbs	Swivel Plain, Oilite, Delrin Bearings		Rigid Plain, Oilite, Delrin Bearings					
4	2	Payron	850	290-40S	290-4US	291-40S	291-4US	7	3 3/4	5 5/8	Width by Length Swivel: 4 x 4 1/2
		Plexite	900	290-4DM	290-4UM	291-4DM	291-4UM				
		Miratek	500	290-4DT	290-4UT	291-4DT	291-4UT				
		Paythane	800		290-4UL						
		Peejay	550	290-4PJ	290-4UJ	291-4PJ	291-4UJ				
		Payvulc	350		290-4UP		291-4UP				
5	2	Payron	1000	290-50S	290-5US	291-50S	291-5US	8	4 1/4	6 1/2	Width by Length Rigid: 3 3/4 x 4 5/8
		Paythane	1000		290-5UL		291-5UL				
		Plexite	950	290-5DM	290-5UM	291-5DM	291-5UM				
		Mirakush	450	290-5DK	290-5UK	291-5DK	291-5UK				
		Miratek	700	290-5DT	290-5UT	291-5DT	291-5UT				
		Peejay	450	290-5PJ	290-5UJ	291-5PJ	291-5UJ				
Payvulc	375		290-5UP		291-5UP						
6	2	Payron	1100	290-60S	290-6US	291-60S	291-6US	9 1/2	5	7 1/2	Bolt Hole Spacing: 2 5/8 x 3 5/8 slotted to 3 x 3
		Paythane	1000		290-6UL		291-6UL				
		Plexite	1200	290-6DM	290-6UM	291-6DM	291-6UM				
		Mirakush	575	290-6DK	290-6UK	291-6DK	291-6UK				
		Miratek	820	290-6DT	290-6UT	291-6DT	291-6UT				
		Peejay	850	290-6PJ	290-6UJ	291-6PJ	291-6UJ				
Payvulc	410		290-6UP		291-6UP						
V-Groove	1000		290-6USG		291-6USG						
8	2	Payron	1200	290-80S	290-8US	291-80S	291-8US	13	6 1/8	9 1/2	Size of Bolt Holes: 2 5/16
		Paythane	1200		290-8UL		291-8UL				
		Plexite	1200	290-8DM	290-8UM	291-8DM	291-8UM				
		Mirakush	800	290-8DK	290-8UK	291-8DK	291-8UK				
		Miratek	1000	290-8DT	290-8UT	291-8DT	291-8UT				
		Payvulc	500		290-8UP		291-8UP				
V-Groove	1200		290-8USG		291-8USG						
Peejay	750	290-8PJ	290-8UJ	291-8PJ	291-8UJ						

• Weights shown represent swivels; Rigid casters weigh approximately 15% less. Sealed wheel bearings, nut and bolt king pins, and other optional features are available. See price list or consult factory.